

Led Indicator



- Green - Wiring center ON
- Red - Pump output Active
- Red - Boiler/HP output Active
- Red - Heating Mode
Blue - Cooling Mode
- Red flashing - Alarm active

- 1 - Red → Zone 1 active
- 2 - Red → Zone 2 active
- 3 - Red → Zone 3 active
- 4 - Red → Zone 4 active
- 5 - Red → Zone 5 active
- 6 - Red → Zone 6 active
- 7 - Red → Zone 7 active
- 8 - Red → Zone 8 active
- 9 - Red → Zone 9 active
- 10 - Red → Zone 10 active

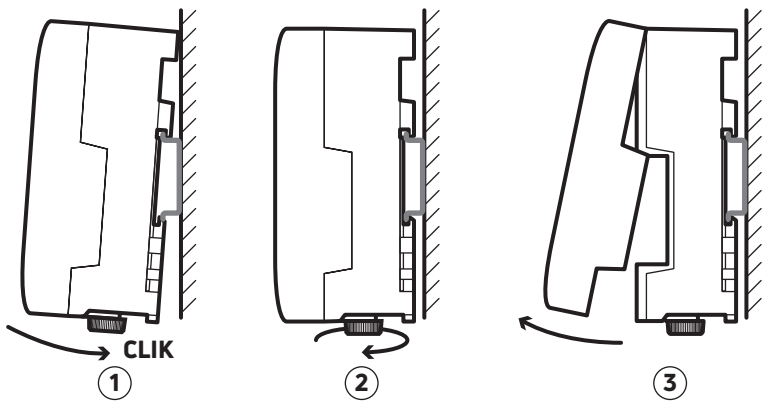
- WC 5 Zones version
- WC 10 Zones version

Connectors

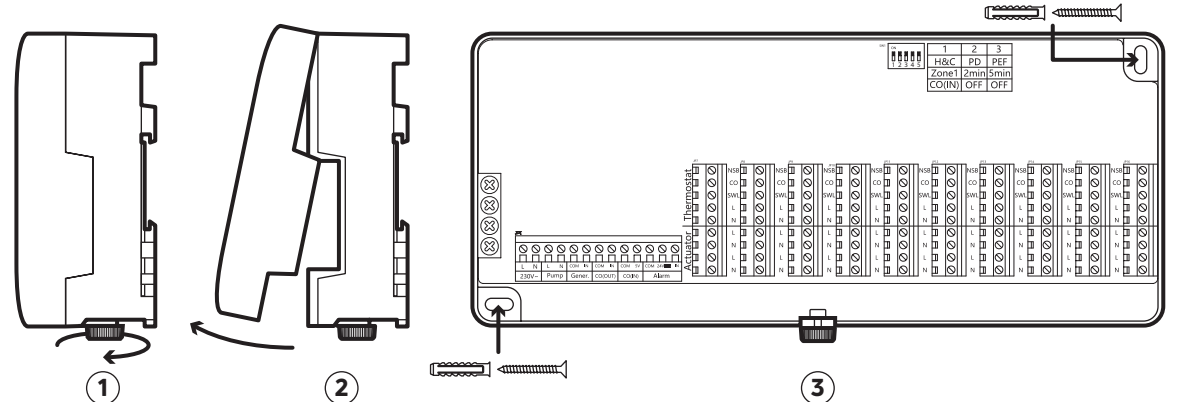
	230 Vac version	24 Vac version
Main Supply	L: Live 230 Vac N: Neutral 230 Vac	L: Live 24 Vac N: Neutral 24 Vac
Pump Output	L: Normally Open Live 230 Vac N: Neutral 230 Vac	Free contact
Generator output	Free contact	
NSB	Night set back input/output (Live 230 Vac)	Night set back input/output (Live 24 Vac)
CO	Change Over Input/Output (Live 230 Vac)	Change Over Input/Output (Live 24 Vac)
Zone (SWL)	Switched output from Thermostat (Live 230 Vac)	Switched output from Thermostat (Live 24 Vac)
L	Live 230 Vac	Live 24 Vac
N	Neutral 230 Vac	Neutral 24 Vac
L	Live 230 Vac actuator 1	Live 24 Vac actuator 1
N	Neutral 230 Vac actuator 1	Neutral 24 Vac actuator 1
L	Live 230 Vac actuator 2	Live 24 Vac actuator 2
N	Neutral 230 Vac actuator 2	Neutral 24 Vac actuator 2
Alarm input	COM: 0 V 24 Vdc Alarm input	
Change over input	Free contact	
Change over output	Free contact	

Installation

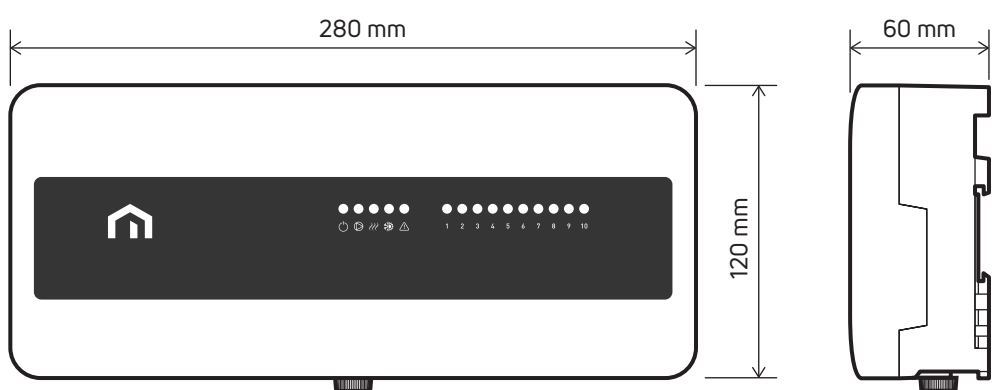
Din rail mounting



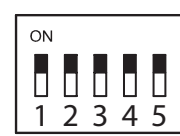
Wall mounting



Dimensions



Jumper functions



	1 Change Over	2 Pump Delay	3 Pump Exercise Function
ON	Signal coming from Zone 1 CO Input	Pump start after 5 min from thermostat request	Pump run at least 5 min every 24 hours
OFF	Signal coming from CO Input	Pump start with thermostat request	Function disabled

Example of electrical connection

